

Contents



Copyright 1994 by Dr. Horst Lüning - All Rights Reserved

DSpace 9 is provided 'as is' without warranty of any kind. Misuse of this program may delete valuable files! Please refer to this help file and the written documentation before using DSpace 9.

[Introduction](#)

[Software License Agreement](#)

[Help](#)

[Main Window](#)

[Compare Window](#)

[Compare List Window](#)

[Find Window](#)

[Find List Window](#)

[License Window](#)

[Converting Your Demolicense](#)

[Dealer Inquiries Welcome](#)

[Glossary](#)

[Index](#)

Introduction

DSPACE 9 is an easy to use tool to help PC and Windows users to locate duplicate or multiple files with equal contents on their hard discs. It also locates scratchfiles left over by various application programs. Comfortable deletion of the located files is provided by DSPACE 9. Space savings reach from several megabytes to 20% of the whole disk capacity.

Multiple Files

Multiple equal files are typically created by users for security reasons or when multiple users share a common PC or a common network server. DSPACE 9 is able to compare files on a single hard disc or directory and on two separate ones. This allows the user to clean his/her own hard disc and to compare the local hard disc with network discs.

Scratchfiles

Scratchfiles are created by nearly every application due to the lack of main memory or for security reasons. A well behaved application program deletes all scratchfiles while exiting. Due to system problems and program errors, some of these scratchfiles often stay undeleted. Everyone has seen those odd file names *.BAK, ~*.doc, *.tmp ... Also files with the length 0 use space on the hard disc, because they eat up at least one smallest allocation unit called a cluster. On top of this, DSPACE 9 allows the user to specify his/her own types of scratchfiles for cleaning up the residue of his/her application.

Profit

The easy to use DSPACE 9 program keeps your hands on your hard disc, preserves valuable disc space, saves time searching for free disc space, when you need it desperately, and may therefore save you a lot of work and additional investments, because your hard disc will reach its capacity limit later.

Software License Agreement

The following Software License Agreement is valid for the registered version of DSpace 9.

1. Grant of License

QwikSoft grants you the right to use one copy of the enclosed software program ('PROGRAM') on a single computer or terminal connected to a single computer (i.e. with a single CPU). You may use the program on a network as long as one single user only uses the PROGRAM at the same time. The PROGRAM and the accompanying written material is called 'SOFTWARE'. Opening this diskette(s) package indicates your acceptance of these terms and conditions. The License Agreement is effective until terminated.

2. Other Restrictions

You may not give away, rent or lease the SOFTWARE. You may transfer the SOFTWARE to another party if the other party agrees in writing to accept the terms and conditions of this License Agreement. Any transfer must include the most recent update and all prior versions. In this case your license is automatically terminated. You may not

- a) reverse engineer, decompile or disassemble the PROGRAM,
- b) delete registration numbers and ownership directions from the SOFTWARE,
- c) merge the PROGRAM with other software or copy the written material,
- d) translate the SOFTWARE in other languages or merge it with other programs or other written material.

3. Copyright

The SOFTWARE is owned by QwikSoft and is protected by international treaty provisions. Therefore, you must treat the SOFTWARE like any other copyrighted material (e.g. a book or musical recording) except that you may either (a) make one copy of the PROGRAM solely for backup or archival purposes, or (b) transfer the PROGRAM to a single hard disc provided you keep the original solely for backup or archival purposes. You may not copy the written materials accompanying the PROGRAM. All rights not expressly granted (especially publishing, reproduction by any means, or realization) are reserved by QwikSoft. You are responsible for any damages QwikSoft arises if you infringe any QwikSoft copyright.

4. Termination of the License Agreement

Your license will terminate upon conditions set forth elsewhere in the Agreement or if you infringe any QwikSoft copyright or fail to comply with any term or condition of this License Agreement. QwikSoft may terminate the license after providing you with (ten) 10 days prior notice and an opportunity to cure, if you fail to pay any amount due to QwikSoft. You agree upon such termination to destroy the complete SOFTWARE and all copies of the PROGRAM.

5. Limited Warranty

The SOFTWARE is provided 'as is' without warranty of any kind, either expressed or implied, including but not limited to the implied warranties of merchantability and fitness for a particular purpose. The entire risk as to the quality and performance of the program is with you. QwikSoft does not warrant that the functions contained in the SOFTWARE will meet your requirements or that the operation of the PROGRAM will be uninterrupted or error free.

6. Limitation of Remedies

In no event will QwikSoft be liable to you for any damages, including any lost profits, lost savings, business interruption, loss of business information, or other incidental or other consequential damages arising out of the use or inability to such a program, even if QwikSoft or its representative has been advised of the possibility of such damages, or for any claim by any other party. In any cases, QwikSoft entire liability and your exclusive remedy shall be the amount of money you paid for the SOFTWARE.

7. General

Whenever possible, each provision of this License Agreement shall be interpreted in such a manner as to be valid and effective under applicable law. If any provision is found to be unlawful, void or for any reason unenforceable, then that provision shall be deemed severable from this License Agreement and shall not affect the validity and the enforceability of remaining portions of this License Agreement.

This License Agreement will be governed by the laws of Germany. Suit or arbitration with respect to this Agreement may be brought only in Weilheim / Obb. (Germany).

Help

DSpace 9's built-in help system covers most of the content of a normal handbook. Help is always there, when you need it. The following list shows you two possibilities to access the help system.

- Press function key < F1>
As a Windows standard, the function key <F1> always starts the help system with the help file of the current application loaded. You will always reach the contents section of the help file.
- Press the button "Help"



Most of the windows in DSpace 9 have a "Help" button. Pressing this button will start the help system for you at the appropriate location in the text.

About Box

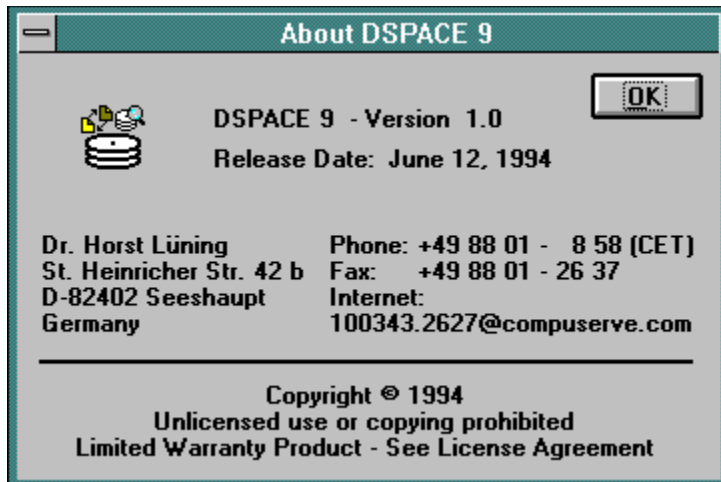
By clicking with the mouse on the "Questionmark" button, the user can open the "About Box" of DSpace 9.

 [<- Press here to get an explanation of the "About Box" dialog.](#)

About Box

Please refer to the address in the "About Box" if you have questions about DSpace 9 or you would like to order a copy.

The following picture shows the "About" Window.



Main Window

The main window of DSpace 9 is shown below:



The main window consists of three parts. At the top is the menubar. In the middle lies the toolbar and at the bottom is the status line.

Menubar

The menubar consists of four entries which have the following meaning

- File
Opens a popup menu with only one entry for exiting the program. You can also exit the program by pressing the keys <Alt+F4> together or by clicking on the exit button. You are asked for a confirmation before the program exits.
- Compare...
Opens the compare dialog box (window), from which you start all searches for duplicate or multiple files with equal contents
- Find...
Opens the find dialog box (window), from which you start all searches for scratchfiles
- Help
Opens the help popup menu, from which you can access the informations you are reading in the moment

Toolbar

The toolbar lets you access all the entries in the menubar by just clicking on an icon button.



Opens the compare dialog box



Opens the find dialog box

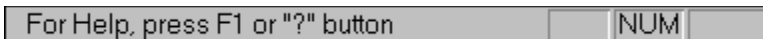


Displays the about box



Exits DSPACE 9 after confirmation

Status Line



On the left hand side of the status line, text is displayed about the meaning of the toolbar buttons as soon as you press the button. If you do not want to start that action, move the mouse cursor away

from that button before you release the mouse button.

On the righthand side of the status line, the status of the numlock key is displayed.

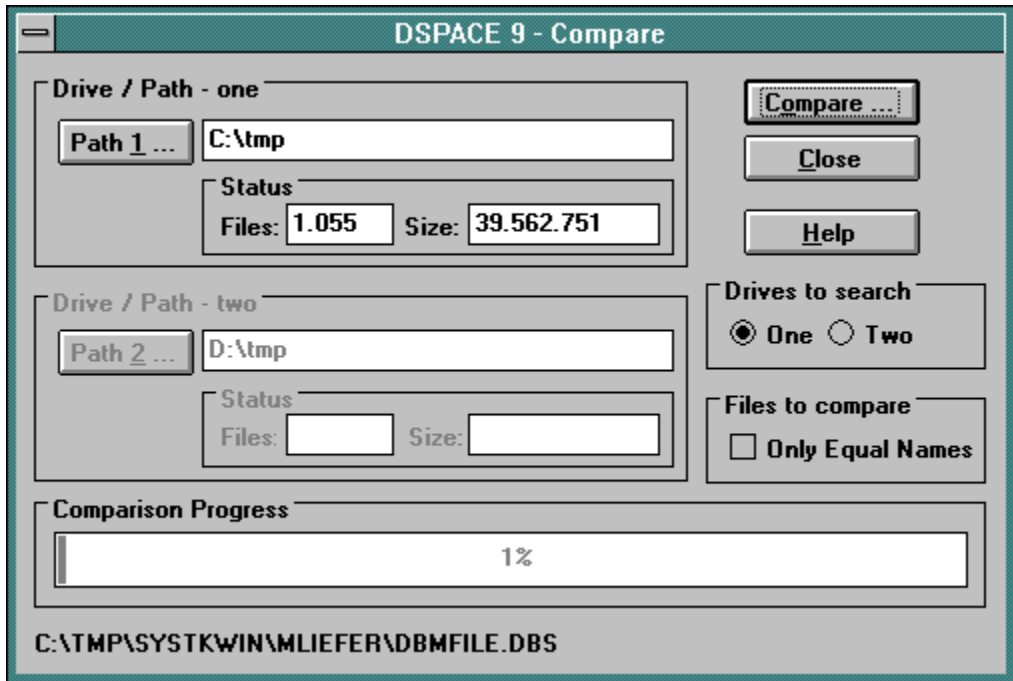
Compare Dialog

The compare window opens after triggering one of the following three actions in the main window of DSpace 9:

- 1 You clicked with the mouse on the <Compare...> menu
- 2 You pressed the keys <Alt+C> together
- 3 You clicked with the mouse on the compare button



The following picture shows the compare dialog:



The compare dialog consists of the following objects:

Drive / Path - one

In the screen region labeled "Drive / Path - one" you specify the first hard disc or subdirectory in which DSpace 9 will look for multiple files with equal contents. The text field at the right hand side of the button labeled "Path 1..." may be entered directly or the path may be specified via the "Choose Directory" window, which opens by pressing the button "Path 1...".



Drive / Path - two

The entry region for the second path works the same way as the first one. Please notice that text field and button are only active, when a two drive search is selected.



[<- Press here to get an explanation of the "Choose Directory" dialog.](#)

Drives to search

The radio button "Drives to search" may be set to "One" or "Two", according to the search you intend to start. Setting the radio button to "One" will compare all files in a single drive or directory one to another.

Setting the radio button to "Two" will compare all files found in both directory trees to each other. The "Two" setting will find equal files in one of the drives / directories as well as across both drives / directories.

Files to compare

The checkbox "Only Equal Names" may be set to restrict DSpace 9 to list only equal files, when the content and the name with extension are the same. These files only differ in their location on the disc (directories).

Close

With the button "Close" you can exit the compare window.

Compare

The "Compare" button starts the comparison run of DSpace 9. Please note that a comparison of all files on large disks and/or slow computers may take hours of time to finish. Comparison runs on CDROMs will take days to finish!

You can always interrupt the comparison run by pressing "ESC" on the upper left hand side of your keyboard. DSpace 9 is a well behaved multitasking program. You can always switch to other tasks during the comparison run by pressing the keys <Alt+Tab> or <Ctrl+Esc> together.

The directory tree(s) with all file names are first read in. The number of files in the tree shows up below the text field of the directory path behind the label "Files:". The accumulated size of the files is shown behind the label "Size:". Please note, that the size is counted in single bytes. The numbers are updated dynamically.

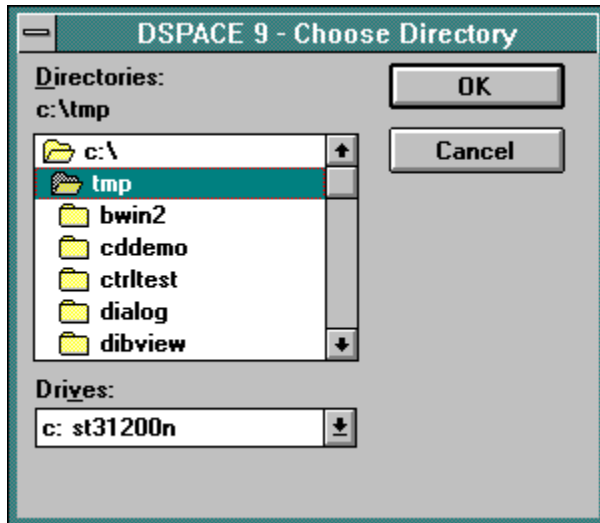
The progress of the search process is shown in the gauge at the lower end of the window. This gauge shows the progress of comparisons by the number of files, not by combinations or file sizes, so the display is not proportional to the elapsing time.

Choose Directory

The "Choose Directory" window is opened by the "Path..." buttons in the "Compare" and "Find" dialogs.

The dialog is derived from the well known file open dialog, which is used by most application programs. The part of the dialog for entering the filename is omitted.

The following picture shows the "Choose Directory" window.



Directories

You change directories by double clicking on the appropriate icon in the directory list. The actually chosen directory is shown at the upper end of the dialog below the label "Directories:".

Drives

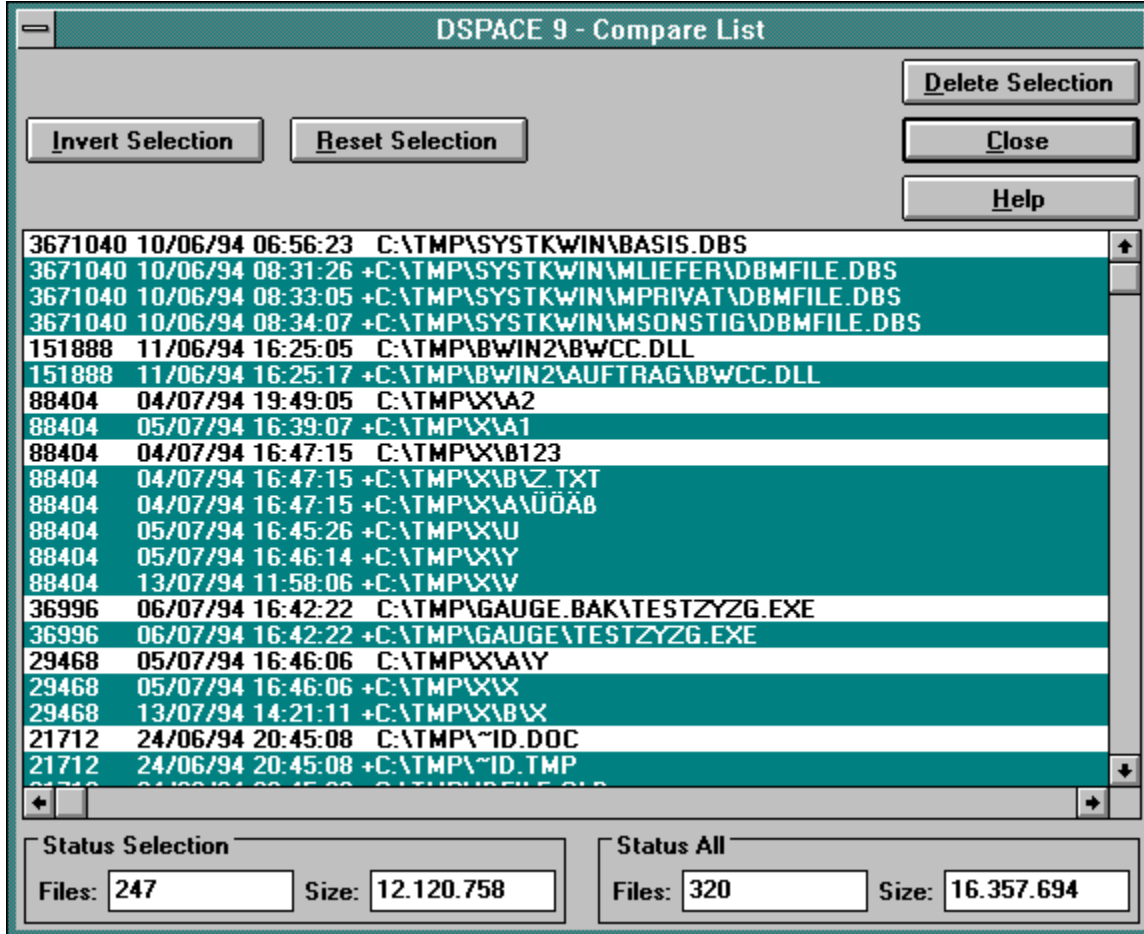
You select another drive in the combo box at the lower end of the dialog.

OK

The button "OK" copies the selected directory into the textfield beside the "Path..." button of the window from which the "Choose Directory" window was opened.

Compare List

After finishing the comparison run, DSpace 9 signals and opens the following window. When no files were found, an error message will show up.



If you look at the large list box you can see, that each row in the list box describes one file. Each row consists of 4 groups of informations, which are listed below.

- 1 File size**
 The first number in each row stands for the file size in bytes (characters). All entries in the list are sorted by this value.
- 2 File date**
 Behind the file size stands the date, when the file was last modified. The style of the date changes with the country, your system is set to.
 -UK dd/mm/yy -US mm/dd/yy -Germany dd.mm.yy

 If you have equal file sizes, the files are sorted by the file date.
- 3 File time**

Behind the file date stands the time, when the file was last modified. The style of the time changes with the country, your system is set to.

-UK, Germany hh:mm:ss -US hh:mm:ss/am/pm

If you do have equal file sizes and file dates, the files are sorted by the file time.

4 File name

Each file name is fully specified, which means that the whole directory and the drive letter is added to the file name.

Duplicate Files

The files are listed in groups of equal files. The oldest file of a group is not selected. To distinguish between the oldest file and a copy, look at the drive letter of the file name. You can see that the copies are marked with a "+" sign. DSpace 9 assumes, that you will keep the oldest file. The copies of that file are preselected for you. If you want to keep a file, you only have to click on the selected file and it is deselected and will not be deleted later.

At the lower end of the dialog you see two regions "Status Selection" and "Status All". In these regions the number of all files in the list box and the number of selected files in the list box are shown behind the labels "Files:". The accumulated file sizes belonging to the number of files are displayed after the labels "Size:".

Invert Selection

The button "Invert Selection" at the top of the window inverts the selections in the list box. This means, that all the selected files will be deselected and vice versa. If you made your changes to the selections your changes are inverted too.

Reset Selection

If you intend to select only a few files for later deletion, it is best to reset all selections first, instead of inverting all false selections by hand, before you start selecting the files to delete.

Delete Selection

With the button "Delete Selection", all selected files are deleted after confirmation. Please note, there is only one confirmation for all the selected files for deletion.

Close

The button "Close" exits the compare list dialog without deleting any files.

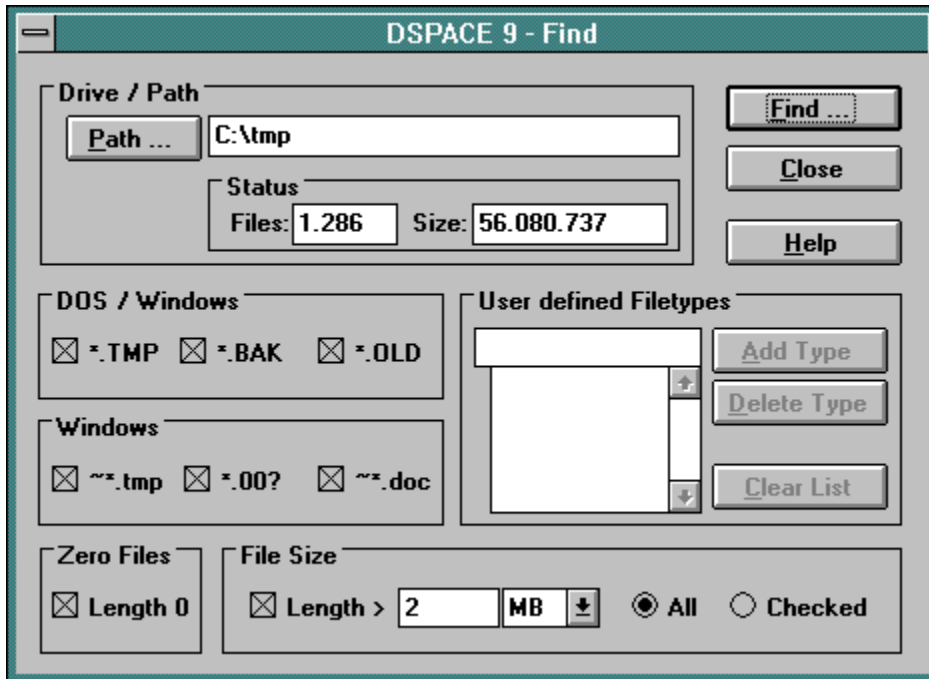
Find Dialog

The find window opens after you have triggered one of the following three actions in the main window of DSpace 9

- 1 You clicked with the mouse on the <Find...> menu
- 2 You pressed the buttons <Alt+F> together
- 3 You clicked with the mouse on the find button



The following picture shows the find window:



The check boxes, text fields and combo boxes may be set in arbitrary combinations. DSpace 9 will always list all found files together in a list box.

The find dialog consists of the following objects:

Drive / Path

In the screen region labeled "Drive / Path" you specify the hard disc or subdirectory in which DSpace 9 will look for scratch files. The text field at the right hand side of the button labeled "Path..." may be entered directly or the path may be specified via the "Choose Directory" window, which opens by pressing the button "Path...".



DOS / Windows

The three check boxes in the screen region labeled "DOS / Windows" allows you to specify three sorts of scratch filetypes, that DSPACE 9 will search for. These scratch filetypes are normally generated by DOS and Windows applications. Please note, that only the extension of the file name is specified. The file name itself is abbreviated with an asterisk (*), which is called a wildcard.

- *.TMP
Finds all files with the extension TMP. E.g. SAVE.TMP
- *.BAK
Finds all files with the extension BAK. E.g. CONFIG.BAK, DOCUMENT.BAK
- *.OLD
Finds all files with the extension OLD. E.g. AUTOEXEC.OLD

The extensions are all written in uppercase letters, because DOS displays all filenames in upper case letters. Uppercase and lowercase letters are not distinguishable by DOS an Windows.

Windows

In the screen region labeld "Windows" three check boxes allow you to specify scratch filetypes, which are normally generated by windows application programs. Two of the filetype labels begin with a tilde (~) and have a special ending. The asterisk (*) behind the tilde is called a wildcard. Please note the questionmark in the ending of the "*.00?" filetype, which is also called a wildcard.

- ~*.tmp
Finds all files which begin with a ~ and have the extension tmp. Example: ~xyz.tmp, ~mf1858.tmp
- *.00?
Finds all files which begin with a ~ and have the extension 00?. Example: autoexec.001, save.009
- ~*.doc
Finds all files which begin with a ~ and have the extension doc. Example: ~project.doc, ~id.doc

The extensions are all written in lowercase letters, because Windows displays all file names in lowercase letters.

Zero Files

Setting the check box labeled "Length 0" will find all files which have no content. Their sizes are displayed with 0 bytes. BUT they use up at least one cluster of disc space, which may be a lot on large hard discs.

File Size

Setting the check box "Length" in the region labeled "File Size" will instruct DSpace 9 to search for files with a length longer than specified in the following text field and combo box. Please note, that the entered file size must lie between 1 and 99,999. The unit of that number is selectable between "Bytes", "kB", "MB" and "GB" in the combo box. Please note also, that the objects in the "File Size"

region are only active, when the check box labeled "Length" is set.

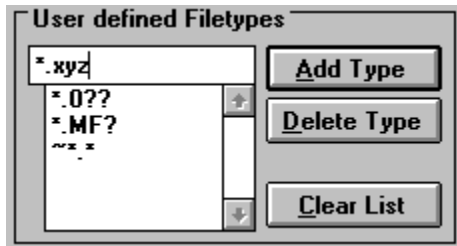
The radio button "All / Checked" has a special meaning.

- If "All" is selected, the search run of DSpace 9 will find all files with a size longer than specified. In other words "All" adds all files longer than specified from the found list.
- If "Checked" is selected, the search run of DSpace 9 will only find files to which, beside the length, also other rules apply. In other words "Checked" filters the files found, that only files longer than specified are displayed.

User defined Filetypes

Often not all scratch files are covered by the six scratch file types predefined in the find window. Therefore the user has the possibility to add their own filetypes to the combo box on the right hand side of the find window.

The following picture shows that part of the find window.



As you can see in the picture, the user has entered the new filetype "*.xyz" in the text field of the combo box. By pressing the "Add Type" button, the new filetype will be added to the list of user defined filetypes shown in the list. If you select a filetype in the list, it can be deleted by pressing the button "Delete Type". Please note, that there is no confirmation for that deletion. If you press the button "Clear List", the list will be completely deleted after a confirmation.

The buttons "Delete Type" and "Clear List" will not delete any files from your hard disc. They will only delete user defined filetypes from the list.

Close

With the button "Close" you can exit the find window without starting a find run.

Find

The "Find" button starts the find run of DSpace 9. Find runs on CDROMs may take a longer time to finish.

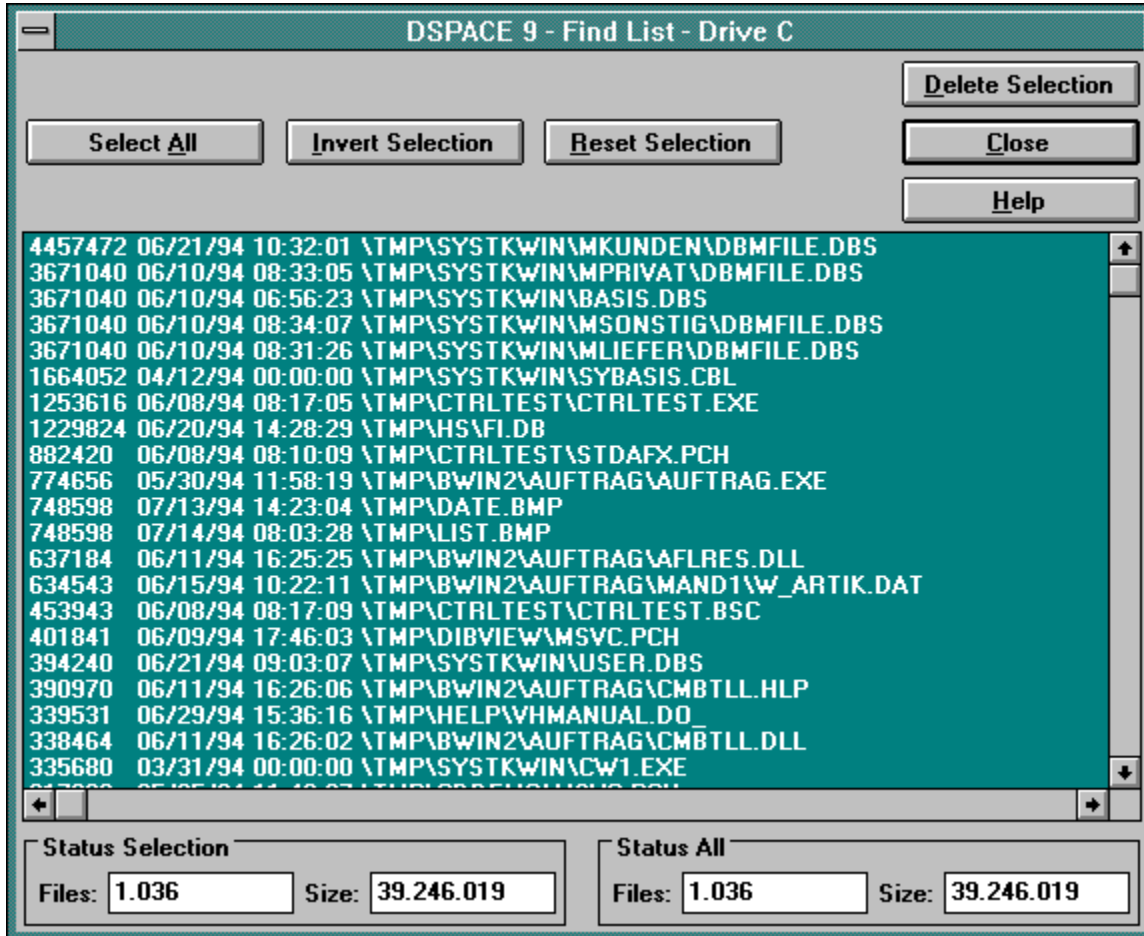
You can always interrupt the find run by pressing "ESC" on the upper left hand side of your keyboard. DSpace 9 is a well behaved multitasking program. You can always switch to other tasks by pressing the keys <Alt+Tab> or <Ctrl+Esc> together.

The directory tree(s) with all file names are read in at first. The number of files in the tree show up

below the text field of the directory path behind the label "Files:". The accumulated size of the files is shown behind the label "Size:". Please note, that the size is counted in bytes. The numbers are updated dynamically.

Find List

After finishing the find run, DSpace 9 signals acoustically and opens the following window. When no files were found, an error message will show up.



If you look at the large list box you can see, that each row in the list box describes one file. Each row consists of 4 groups of informations, which are listed below.

- 1 File size
The first number in each row stands for the file size in bytes. All entries in the list are sorted by this value.
- 2 File date
Behind the file size is the date, when the file was last modified. The style of the date changes with the country, your system is set to.
-UK dd/mm/yy -US mm/dd/yy -Germany dd.mm.yy
- 3 File time
Behind the file date stands the time, when the file was last modified. The style of the time changes with the country, your system is set to.

4 File name

Each file name is preceded by the whole directory path. The drive letter is omitted. You can see the drive letter for all files in the title bar of the dialog

Files found

All files found in the specifications given in the find window are listed and selected in the list box. DSpace 9 assumes, that you will delete all files found. If you want to keep a file, you only have to click on the selected file and it is deselected and will not be deleted later.

At the bottom of the dialog box, you see two regions "Status Selection" and "Status All". In these regions the number of files in the list box, and the number of selected files in the list box, are shown behind the labels "Files:". The accumulated file sizes belonging to the number of files are displayed after the labels "Size:".

Select All

With the "Select All" button you can select all files in the list for later deletion. This is an easy way to cancel deselections made before. This button will not be normally used, because DSpace 9 preselects all files for you while opening the dialog box.

Invert Selection

The button "Invert Selection" in the top of the dialog reverses the selections in the list box. This means, that all the selected files will be deselected and vice versa. If you made your changes to the selections your changes are reversed also.

Reset Selection

If you intend to select only a few files for later deletion, it is best to reset all selections first, instead of inverting all false selections by hand, before you start selecting the files to delete.

Delete Selection

With the button "Delete Selection", all selected files are deleted after confirmation. Please note, there is only one confirmation for all the selected files for deletion.

Close

The button "Close" exits the find list dialog without deleting any files.

License

DSPACE 9 is underwritten by a strict licensing policy. All known offences (offenses) against this license policy will be prosecuted without exception. For details, see the QwikSoft Software License Agreement, which came with your program package. The Software License Agreement may also be displayed in the registered version with the menu command 'Help,License Agreement'.

The license entry window, which appears during startup, is shown below.



This entry window may be skipped by entering an arbitrary character on the command line behind the program name. The license window is closed immediately when you click in that window or when you hit any key.

Converting Your Demolicense

If you received a demodiskette of DSpace 9 or you downloaded it from a mailbox, BBS system, or ftp server, DSpace 9 is not fully operational.

There are two main blocks in the shareware version, which restricts you from getting the full benefit of DSpace 9.

- 1 You cannot delete any files. Pressing the delete button will open a message for converting your license.
- 2 Your search for files is limited to the first 100 files in a subdirectory tree. If more than 100 files per tree are recognized by DSpace 9, the same message for converting your license will show up.

Software Piracy

If you loaded a fully functional copy of DSpace 9 from a mailbox, BBS system, or ftp server, please inform the QwikSoft immediately. You will be rewarded once evidence has been collected.

Ordering Your Own License

Ordering your copy of a full functional version of DSpace 9 is easy. Print out the order sheet called "DSPACE.WRI" in the installation directory with the Windows Write program and send it to QwikSoft.

Credit Cards

We accept the following credit cards:



MasterCard ® and allied cards



EUROCARD

Eurocard ®



Access ® Card

The VISA logo features the word "VISA" in a bold, italicized, black font, with a blue horizontal bar above it and a yellow horizontal bar below it.

VISA

VISA ® Card

Dealer Inquiries Welcome

QwikSoft is searching for dealers worldwide. Our resellers conditions are very attractive.

Please note that the minimum number of copies a reseller has to buy is 5. Demo diskettes may be duplicated freely.

If at first, you plan to buy a single fully functional copy, your full payment will be credited to further orders.

Glossary



C

CDROM
CDROMs
cluster
combo box

D

dialog
DOS

E

extension

F

file name
file open
filetypes

H

hard disc

L

list box

M

multitasking

P

PC

R

radio button

S

server

T

text field

W

wildcard

Windows Write

Windows

Index

- [≡](#)
- <#>
- [A](#)
- [B](#)
- [C](#)
- [D](#)
- [E](#)
- [F](#)
- [G](#)
- [H](#)
- [I](#)
- [J](#)
- [K](#)
- [L](#)
- [M](#)
- [N](#)
- [O](#)
- [P](#)
- [Q](#)
- [R](#)
- [S](#)
- [T](#)
- [U](#)
- [V](#)
- [W](#)
- [X](#)
- [Y](#)
- [Z](#)

A

- [About Box](#)
- [About Box](#)
- [About](#)
- [Agreement](#)

C

- [Choose Dir](#)
- [Choose Directory](#)
- [Compare List](#)
- [Compare List](#)
- [Compare](#)
- [Compare](#)
- [Contents](#)
- [Contents](#)
- [Converting Your Demolicense](#)

D

[Dealer](#)

[Dealer](#)

[Delete Selection](#)

[Delete Selection](#)

[Demo](#)

[Directory](#)

[DOS / Windows](#)

[Drive / Path - one](#)

[Drive / Path - two](#)

[Drive / Path](#)

[Drive](#)

[Drives to search](#)

[Duplicate Files](#)

F

[File Size](#)

[Files found](#)

[Files to compare](#)

[Find Dialog](#)

[Find List](#)

[Find List](#)

[Find](#)

[Find](#)

G

[Glossary](#)

[Glossary](#)

H

[Help About](#)

[Help and Context Sensitive Help](#)

[Help](#)

[Help](#)

I

[index](#)

[Index](#)

[Introduction](#)

[Introduction](#)

L

[License](#)

[License](#)

M

[Main Window](#)

[Main Window](#)

Menubar

Multiple Files

O

Ordering Your Own License

P

Profit

R

Reseller

S

Scratchfiles

Select All

Statusline

T

Toolbar

U

User defined Filetypes

W

Windows

Z

Zero Files

CDROM

CDROM stands for Compact Disk Read Only Memory. Data is stored optically on a plastic disc, which is only readable by laser beam devices. The term CDROM is often mixed up with the physical device to read the compact discs.

CDROMs

CDROM stands for Compact Disk Read Only Memory. Data is stored optically on a plastic disc, which is only readable by laser beam devices. The term CDROM is often mixed up with the physical device to read the compact discs.

cluster

Information is stored on the hard disc in sectors. Each sector contains 512 bytes normally. A cluster is a fixed number of sectors, depending on the size of the hard disc. One cluster of a 100 MB disk covers normally 8 sectors (2.048 byte). On a gigabyte hard disc (1.000 MB) a cluster consists of 32 sectors (16.384 bytes).

combo box

A combo box is a graphical user interface (GUI) object, which is used to let the user select an item from a list.

dialog

A dialog is a separate window which groups graphical user interfaces together for easier use. Often a dialog is also called dialog box.

DOS

stands for Disk Operating System and means all programs which are essentially necessary to let your computer function properly.

extension

A complete file name consists of the name (max 8 characters) and the extension (max 3 characters) separated by a dot.

file name

A complete file name consists of the name (max 8 characters) and the extension (max 3 characters).

file open

The file open dialog is the normal dialog that an application like Windows Write opens, when you choose "Open" from the "File" menu.

filetypes

A filetype is an abbreviation of a group of file names. A filetype consists of letters, numerals and wildcards like ? and *.

hard disc

Hard discs are used to store data permanently, when you turn your computer off. Hard discs consists of multiple metallic discs on a common axis, which are plated with a magnetic material. The information is stored and retrieved thru magnetic heads equivalent to those of a tape recorder. To reach all places on the discs, the discs are rotating and the heads can be moved from the inside to the outside of the disc and vice versa.

list box

A list box is a graphical user interface (GUI) object which is used to let the user select one or more items from a list of items.

multitasking

Running more than one program at the same time on a computer is called multitasking. With Windows each program must give control to the system from time to time, to let the multitasking mechanism function properly. Well behaved multitasking programs under Windows give the control to the system at least every second.

PC

A PC is a personal computer with an x86 intel compatible CPU (e. g.: 80286, 80386, 80486 or Pentium).

radio button

The radio buttons got their names from the tube radios of the fifties and sixties of our century, which had a row of knobs with the same behavior.

server

A network server is a computer, that shares its hard discs, printers and other expensive equipment to several users. When you store or retrieve data to/from the hard disc of your server, the data is transferred via a cable to/from that distant computer. It depends on your system privileges whether you are allowed to read/create or delete files on the discs of your server.

text field

A text field is a graphical user interface (GUI) object which is used to let the user key in or modify a string of characters.

wildcard

Wildcards in a file name are placeholders. * is a placeholder for any character until the end of the file name or extension. A*X.123 is invalid, because the * hides the X.? is a placeholder for a single character. *.??? is equivalent to *.*. A ? can also match a missing character. A??.* will match the file A1.TXT.

Windows Write

Windows Write is a wordprocessor, which comes with windows at no additional cost. Double clicking with your mouse on any *.wri file from within the File Manager will start Windows Write with the file loaded.

Windows

"Windows" is a trademark of Microsoft Corporation.

